



Jackson County 2013 Weather Data

61 Years of Weather Data Recorded at the UF/IFAS Marianna North Florida Research and Education Center



Doug Mayo
Jackson County Extension Director

1952-2008 Rainfall Data compiled by
Ed Jowers, Emeritus County Extension Director

Data provided by Florida Automated Weather Station (FAWN)
UF/IFAS North Florida Research and Education Center
Greenwood, Florida



<http://fawn.ifas.ufl.edu/station.php?id=130>

Tower Name	Tower Number	Latitude Degree, Minutes	Latitude Degrees Minutes, Seconds	Latitude Degrees Decimal	Longitude Degree, Minutes	Longitude Degrees Minutes, Seconds	Longitude Degrees Decimal	Elevation Feet
Marianna	130.00	N 30°51.000'	N 30°50'00.00"	N 30.85000°	-85°09.910'	-85°09'54.60"	-85.16516°	115'

2013 Marianna UF/IFAS FAWN Weather Summary

Month	Air Temp			Soil Temp			Rainfall Inches	Dev from 61 yr Avg
	High	Low	Avg	High	Low	Avg		
January	82	31	58	64	44	53	1.05	-3.90
February	77	27	55	61	42	52	12.86	7.74
March	83	29	55	66	42	53	2.99	-2.44
April	88	40	67	75	50	64	3.54	-0.59
May	94	44	73	90	57	73	0.64	-2.88
June	97	68	80	89	68	78	3.72	-1.17
July	96	69	78	84	67	75	13.39	7.17
August	96	66	79	89	68	77	13.17	7.84
September	96	58	78	86	66	76	2.14	-2.24
October	92	36	68	78	53	66	1.96	-0.83
November	79	28	58	65	40	55	3.91	0.57
December	83	30	56	62	40	50	4.44	0.36
2013	97	27	67	90	40	64	63.81	9.61

Data: UF/IFAS Florida Automated Weather Network Marianna Station

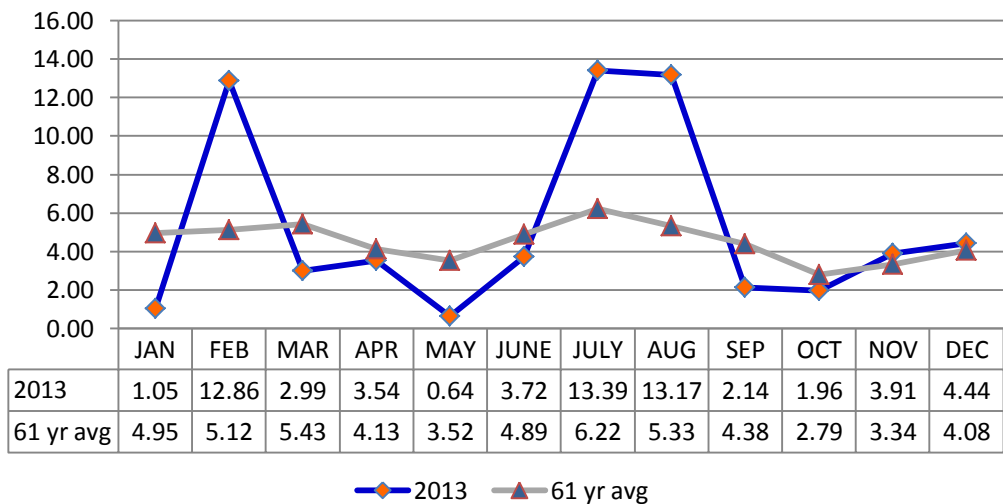
Total days in 2013 <32°

14

Total days in 2013 >95°

12

Monthly Rainfall @ Marianna FAWN



January Daily Weather Data

Temperature							Precipitation				
Date	Air Temp 2 ft			Soil Temp 4 inch			Rain	Evapo Trans			
	Avg	Min	Max	Avg	Min	Max	Inches	Inches			
1-Jan-13	63	49	76	49	45	53	0.00	0.06			
2-Jan-13	60	53	69	53	52	54	0.00	0.05			
3-Jan-13	47	39	53	50	47	52	0.34	0.04			
4-Jan-13	44	36	56	46	44	49	0.00	0.04			
5-Jan-13	47	37	58	46	44	48	0.06	0.04			
6-Jan-13	50	45	56	47	46	49	0.00	0.04			
7-Jan-13	49	40	62	47	44	50	0.01	0.04			
8-Jan-13	57	45	72	49	46	53	0.00	0.05			
9-Jan-13	64	60	70	53	50	55	0.00	0.05			
10-Jan-13	69	63	80	56	54	60	0.00	0.06			
11-Jan-13	68	61	80	57	55	60	0.00	0.06			
12-Jan-13	68	58	79	58	55	61	0.00	0.06			
13-Jan-13	70	64	80	59	57	62	0.00	0.07			
14-Jan-13	71	63	80	61	59	63	0.00	N/A			
15-Jan-13	69	64	78	60	59	62	0.00	0.06			
16-Jan-13	71	65	80	62	60	64	0.06	0.07			
17-Jan-13	49	42	65	57	51	61	0.03	0.06			
18-Jan-13	47	37	61	51	48	55	0.00	0.04			
19-Jan-13	49	36	65	51	47	55	0.00	0.05			
20-Jan-13	54	42	69	52	49	56	0.00	0.05			
21-Jan-13	52	37	68	51	48	55	0.00	0.05			
22-Jan-13	46	35	59	50	47	53	0.00	0.05			
23-Jan-13	47	31	65	49	45	53	0.00	0.05			
24-Jan-13	57	42	73	50	47	54	0.00	0.06			
25-Jan-13	59	47	73	52	49	56	0.00	0.07			
26-Jan-13	61	49	76	54	51	58	0.00	0.07			
27-Jan-13	60	45	75	55	51	58	0.00	0.07			
28-Jan-13	65	55	79	57	54	60	0.00	0.08			
29-Jan-13	70	59	82	59	56	62	0.00	0.08			
30-Jan-13	68	51	79	60	56	62	0.54	0.08			
31-Jan-13	46	37	58	52	50	56	0.01	0.06			
High			82			64					
Low		31			44						
Average	58	48	70	53	50	56					
Days over 95 ⁰	0			Total for Month			1.05	1.71	1.1	1.7	
				Number of Rain Days			7.00			7.0	
Days below 32 ⁰	1			Historic Average			4.95				
				Deviation from Average			-3.90			-3.9	
				Net Gain/loss (Rain - ET)			-0.66			-0.7	

Year Cumulative	
Rain	ET
1.1	1.7
7.0	
5.0	
-3.9	
	-0.7

February Daily Weather Data

Date	Temperature						Precipitation	
	Air Temp 2 ft			Soil Temp 4 inch			Rain	Evapo Trans
	Avg	Min	Max	Avg	Min	Max	Inches	Inches
1-Feb-13	46	34	61	49	47	53	0.00	0.06
2-Feb-13	47	30	66	48	44	53	0.00	0.06
3-Feb-13	52	41	66	50	47	54	0.00	0.07
4-Feb-13	51	37	65	49	46	53	0.00	0.06
5-Feb-13	57	46	68	52	49	54	0.11	0.06
6-Feb-13	62	54	75	55	52	59	0.00	0.07
7-Feb-13	59	53	66	54	53	55	2.06	0.05
8-Feb-13	59	53	70	55	53	59	0.12	0.06
9-Feb-13	53	41	67	54	50	58	0.00	0.07
10-Feb-13	62	47	74	54	50	57	0.00	0.08
11-Feb-13	66	59	77	57	56	59	0.17	0.07
12-Feb-13	63	59	72	57	56	58	0.19	0.06
13-Feb-13	62	49	71	58	54	59	0.08	0.07
14-Feb-13	46	37	54	52	49	54	0.00	0.05
15-Feb-13	49	34	67	51	46	56	0.00	0.07
16-Feb-13	46	36	54	49	46	52	0.02	0.06
17-Feb-13	40	27	56	47	42	52	0.00	0.06
18-Feb-13	46	30	63	47	43	52	0.00	0.07
19-Feb-13	55	42	67	49	46	52	0.16	0.07
20-Feb-13	47	32	60	48	44	53	0.00	0.07
21-Feb-13	54	34	73	49	44	54	0.00	0.08
22-Feb-13	65	63	67	54	51	55	2.28	0.04
23-Feb-13	65	56	71	57	55	58	1.75	0.06
24-Feb-13	61	51	72	57	53	61	0.18	0.08
25-Feb-13	58	53	62	54	53	57	4.58	0.05
26-Feb-13	61	51	68	56	54	59	1.16	0.09
27-Feb-13	53	45	63	53	51	56	0.00	0.07
28-Feb-13	52	43	61	52	49	56	0.00	0.08
High			77			61		
Low		27			42			
Average	55	44	66	52	49	56		
Days over 95 ^o	0			Total for Month			12.86	1.84
				Number of Rain Days			13.00	
				59 year Average			5.12	
Days below 32 ^o	3			Deviation from Average			7.74	
				Net Gain/loss (Rain - ET)				11.02

Year Cumulative	
Rain	ET
13.9	3.6
20.0	
10.1	
3.8	
	10.4

March Daily Weather Data

Temperature							Precipitation					
Date	Air Temp 2 ft			Soil Temp 4 inch			Rain	Evapo Trans				
	Avg	Min	Max	Avg	Min	Max	Inches	Inches				
1-Mar-13	46	38	54	50	47	53	0.00	0.06				
2-Mar-13	41	33	49	47	44	49	0.00	0.06				
3-Mar-13	40	32	50	46	43	50	0.00	0.06				
4-Mar-13	49	29	67	48	42	54	0.00	0.08				
5-Mar-13	61	46	75	51	48	55	0.00	0.09				
6-Mar-13	47	41	56	50	46	54	0.01	0.08				
7-Mar-13	46	32	64	50	44	56	0.00	0.08				
8-Mar-13	52	34	73	51	46	58	0.00	0.09				
9-Mar-13	56	40	71	53	48	57	0.00	0.09				
10-Mar-13	63	53	77	55	51	61	0.00	0.11				
11-Mar-13	62	52	75	55	53	57	1.37	0.08				
12-Mar-13	53	44	65	53	50	57	0.00	0.09				
13-Mar-13	53	39	66	52	48	57	0.00	0.09				
14-Mar-13	49	38	63	51	46	56	0.00	0.09				
15-Mar-13	56	37	75	52	47	59	0.00	0.1				
16-Mar-13	62	43	76	55	50	60	0.00	0.11				
17-Mar-13	61	52	70	55	53	57	0.06	0.07				
18-Mar-13	69	59	81	58	55	63	0.41	0.1				
19-Mar-13	63	56	77	59	56	65	0.36	0.1				
20-Mar-13	58	43	68	57	54	60	0.00	0.08				
21-Mar-13	52	42	66	54	50	58	0.00	0.09				
22-Mar-13	56	47	66	54	50	57	0.00	0.08				
23-Mar-13	58	55	63	54	53	55	0.37	0.05				
24-Mar-13	72	50	83	60	54	66	0.28	0.13				
25-Mar-13	49	40	60	55	51	58	0.00	0.1				
26-Mar-13	45	35	55	51	47	56	0.00	0.09				
27-Mar-13	46	32	62	51	46	58	0.00	0.09				
28-Mar-13	52	34	71	53	47	60	0.00	0.1				
29-Mar-13	58	38	76	56	50	62	0.00	0.11				
30-Mar-13	62	44	76	57	52	62	0.00	0.11				
31-Mar-13	66	56	79	59	55	62	0.13	0.1				
High			83			66						
Low		29			42							
Average	55	42	68	53	49	58						
Days over 95 ^o	0			Total for Month			2.99	2.76	16.9	6.3		
				Number of Rain Days			8.00			28.0		
Days below 32 ^o	3			59 year Average			5.43					
				Deviation from Average			-2.44			1.4		
				Net Gain/loss (Rain - ET)			0.23			10.6		

Year Cumulative	
Rain	ET
16.9	6.3
28.0	
15.5	
1.4	
	10.6

April Daily Weather Data

Date	Temperature						Precipitation					
	Air Temp 2 ft			Soil Temp 4 inch			Rain	Evapo Trans				
	Avg	Min	Max	Avg	Min	Max	Inches	Inches				
1-Apr-13	67	55	78	61	57	66	0.00	0.12				
2-Apr-13	65	48	82	61	55	68	0.00	0.12				
3-Apr-13	59	54	62	59	57	61	0.22	N/A				
4-Apr-13	60	54	65	58	57	61	0.14	N/A				
5-Apr-13	53	45	60	56	54	58	0.01	0.07				
6-Apr-13	59	40	78	57	50	65	0.00	0.12				
7-Apr-13	65	51	81	60	55	66	0.00	0.12				
8-Apr-13	67	52	83	62	57	67	0.00	0.12				
9-Apr-13	71	55	87	64	58	71	0.00	0.15				
10-Apr-13	71	58	86	65	61	70	0.00	0.14				
11-Apr-13	73	60	84	65	62	69	0.46	0.12				
12-Apr-13	69	56	77	66	63	70	0.00	0.12				
13-Apr-13	66	49	82	64	58	71	0.00	0.14				
14-Apr-13	61	58	66	61	58	65	1.25	0.05				
15-Apr-13	70	57	83	63	57	69	0.00	0.12				
16-Apr-13	76	66	88	68	63	73	0.00	0.15				
17-Apr-13	73	66	82	67	65	71	0.00	0.11				
18-Apr-13	74	63	84	67	63	71	0.00	0.14				
19-Apr-13	63	47	82	65	60	69	0.93	0.1				
20-Apr-13	56	45	69	61	56	67	0.01	0.13				
21-Apr-13	62	44	77	62	56	68	0.00	0.13				
22-Apr-13	66	62	73	64	61	67	0.00	0.1				
23-Apr-13	68	60	81	66	61	71	0.00	0.14				
24-Apr-13	70	56	84	66	62	71	0.00	0.14				
25-Apr-13	70	56	82	68	64	72	0.00	0.13				
26-Apr-13	67	49	86	67	61	74	0.00	0.15				
27-Apr-13	72	57	85	68	64	73	0.00	0.14				
28-Apr-13	71	60	83	68	65	72	0.04	0.13				
29-Apr-13	68	63	75	67	65	68	0.48	0.07				
30-Apr-13	72	62	85	69	64	75	0.00	0.13				
High			88			75						
Low		40			50							
Average	67	55	79	64	60	69						
Days over 95 ^o	0			Total for Month			3.54	3.40	20.4	9.7		
				Number of Rain Days			9.00			37.0		
Days below 32 ^o	0			59 year Average			4.13			19.6		
				Deviation from Average			-0.59			0.8		
				Net Gain/loss (Rain - ET)						0.14		

Year Cumulative	
Rain	ET
20.4	9.7
37.0	
19.6	
0.8	
	10.7

May Daily Weather Data

Temperature							Precipitation	
Date	Air Temp 2 ft			Soil Temp 4 inch			Rain	Evapo Trans
	Avg	Min	Max	Avg	Min	Max	Inches	Inches
1-May-13	68	65	72	67	65	69	0.12	0.07
2-May-13	68	63	77	65	63	68	0.04	0.09
3-May-13	66	64	71	65	64	67	0.21	0.08
4-May-13	58	49	64	62	60	64	0.27	0.08
5-May-13	60	45	76	61	57	66	0.00	0.13
6-May-13	59	44	70	61	57	65	0.00	0.12
7-May-13	65	53	76	64	59	69	0.00	0.14
8-May-13	69	54	83	66	60	72	0.00	0.15
9-May-13	74	63	87	69	64	75	0.00	0.16
10-May-13	71	59	82	69	65	73	0.00	0.14
11-May-13	71	62	79	68	66	70	0.00	0.1
12-May-13	72	62	82	70	65	76	0.00	0.16
13-May-13	65	51	78	70	64	76	0.00	0.16
14-May-13	68	48	84	70	64	78	0.00	0.15
15-May-13	72	54	88	73	66	80	0.00	0.17
16-May-13	74	62	87	74	69	81	0.00	0.16
17-May-13	74	59	89	75	69	82	0.00	0.16
18-May-13	74	62	87	75	71	80	0.00	0.14
19-May-13	77	65	92	77	72	84	0.00	0.16
20-May-13	81	70	94	80	74	87	0.00	0.18
21-May-13	80	66	93	80	75	86	0.00	0.16
22-May-13	80	69	93	81	76	87	0.00	0.17
23-May-13	80	70	93	82	76	88	0.00	0.2
24-May-13	78	66	90	81	76	88	0.00	0.2
25-May-13	74	56	91	80	73	88	0.00	0.17
26-May-13	77	59	94	81	74	89	0.00	0.18
27-May-13	78	63	93	82	75	89	0.00	0.18
28-May-13	79	66	93	82	75	90	0.00	0.19
29-May-13	80	71	94	81	77	87	0.00	0.17
30-May-13	81	72	92	80	76	85	0.00	0.16
31-May-13	81	72	93	81	76	86	0.00	0.17
High			94			90		
Low		44			57			
Average	73	61	85	73	68	79		
				Total for Month			0.64	4.65
Days over 95 ^o				0			Number of Rain Days	4.00
Days of 100 ^o				0			59 year Average	3.52
Days below 32 ^o				0			Deviation from Average	-2.88
				Net Gain/loss (Rain - ET)			-4.01	

Year Cumulative	
Rain	ET
21.1	14.4
41.0	
23.2	
-2.1	
	6.7

June Daily Weather Data

Temperature							Precipitation		
Date	Air Temp 2 ft			Soil Temp 4 inch			Rain	Evapo Trans	
	Avg	Min	Max	Avg	Min	Max	Inches	Inches	
1-Jun-13	82	72	93	80	76	85	0.00	0.16	
2-Jun-13	80	71	95	80	76	86	0.01	0.15	
3-Jun-13	77	70	87	78	75	81	0.19	0.12	
4-Jun-13	79	71	96	77	73	84	0.11	0.15	
5-Jun-13	77	70	90	76	72	80	0.90	0.13	
6-Jun-13	73	70	78	72	70	74	0.04	0.07	
7-Jun-13	78	68	91	74	68	81	0.00	0.17	
8-Jun-13	81	69	93	77	70	83	0.00	0.17	
9-Jun-13	74	71	81	73	70	76	0.65	0.06	
10-Jun-13	77	71	86	72	69	75	0.11	0.11	
11-Jun-13	82	72	94	76	70	83	0.00	0.19	
12-Jun-13	85	73	97	79	73	85	0.00	0.2	
13-Jun-13	85	76	96	81	76	87	0.00	0.21	
14-Jun-13	83	74	93	80	77	86	0.00	0.18	
15-Jun-13	83	73	94	81	76	87	0.00	0.21	
16-Jun-13	81	73	90	79	76	82	0.09	0.14	
17-Jun-13	82	74	91	79	74	84	0.12	0.18	
18-Jun-13	81	73	91	78	74	83	0.00	0.18	
19-Jun-13	81	72	93	80	75	87	0.01	0.2	
20-Jun-13	82	70	93	81	76	87	0.00	0.18	
21-Jun-13	81	72	93	82	76	88	0.00	0.18	
22-Jun-13	79	71	94	82	76	89	0.23	0.18	
23-Jun-13	77	71	88	78	76	80	0.06	0.12	
24-Jun-13	77	71	94	77	73	85	0.61	0.15	
25-Jun-13	81	71	93	78	72	85	0.01	0.19	
26-Jun-13	83	73	95	80	74	87	0.00	0.21	
27-Jun-13	83	74	92	80	76	83	0.00	0.15	
28-Jun-13	79	71	88	77	73	80	0.17	0.09	
29-Jun-13	78	70	89	74	71	79	0.40	0.13	
30-Jun-13	78	72	85	75	72	78	0.01	0.12	
High			97			89			
Low		68			68				
Average	80	72	91	78	74	83			
Days over 95 ^o				4	Total for Month			3.72	4.68
Days of 100 ^o				0	Number of Rain Days			17.00	
Days below 32 ^o				0	59 year Average			4.89	
					Deviation from Average			-1.17	
					Net Gain/loss (Rain - ET)				-0.96

Year Cumulative	
Rain	ET
24.8	19.0
58.0	
28.1	
-3.3	
	5.8

July Daily Weather Data

Date	Temperature						Precipitation	
	Air Temp 2 ft			Soil Temp 4 inch			Rain	Evapo Trans
	Avg	Min	Max	Avg	Min	Max	Inches	Inches
1-Jul-13	78	69	90	75	71	80	0.01	0.15
2-Jul-13	80	72	91	76	73	81	0.00	0.15
3-Jul-13	74	71	76	73	70	76	1.22	0.05
4-Jul-13	72	69	73	69	67	70	2.37	0.04
5-Jul-13	74	70	81	69	67	72	0.87	0.09
6-Jul-13	75	72	84	70	68	73	1.63	0.1
7-Jul-13	76	70	88	72	68	76	1.05	0.12
8-Jul-13	79	72	91	74	70	80	0.00	0.16
9-Jul-13	82	71	93	76	71	82	0.00	0.19
10-Jul-13	78	72	89	76	73	78	0.09	0.11
11-Jul-13	76	72	85	74	72	77	0.12	0.11
12-Jul-13	78	71	91	75	71	81	1.03	0.15
13-Jul-13	75	70	84	73	71	77	0.44	0.12
14-Jul-13	77	72	87	74	71	78	0.33	0.14
15-Jul-13	78	72	90	75	71	80	0.03	0.16
16-Jul-13	80	74	92	76	72	81	0.00	0.19
17-Jul-13	82	72	93	77	73	83	0.00	0.19
18-Jul-13	81	73	93	78	73	84	0.00	0.2
19-Jul-13	80	73	90	78	75	83	0.08	0.16
20-Jul-13	76	71	86	75	74	78	1.17	0.11
21-Jul-13	78	73	87	75	72	79	0.15	0.15
22-Jul-13	75	72	84	74	72	76	0.57	0.09
23-Jul-13	77	69	91	74	71	79	1.12	N/A
24-Jul-13	76	70	90	74	71	78	0.84	N/A
25-Jul-13	81	72	91	76	71	81	0.01	0.18
26-Jul-13	82	72	92	78	73	83	0.00	0.19
27-Jul-13	78	72	90	76	74	80	0.00	0.12
28-Jul-13	79	73	87	76	73	79	0.19	0.14
29-Jul-13	82	74	96	78	73	84	0.00	0.19
30-Jul-13	81	74	94	78	75	83	0.00	0.14
31-Jul-13	79	74	92	78	75	83	0.07	0.15
High			96			84		
Low		69			67			
Average	78	72	88	75	72	79		
				Total for Month			13.39	4.04
Days over 95 ^o				1	Number of Rain Days			21.00
Days of 100 ^o				0	59 year Average			6.22
Days below 32 ^o				0	Deviation from Average			7.17
				Net Gain/loss (Rain - ET)				9.35

Year Cumulative	
Rain	ET
38.2	23.1
79.0	
34.3	
3.9	
	15.1

August Daily Weather Data

Date	Temperature						Precipitation			
	Air Temp 2 ft			Soil Temp 4 inch			Rain	Evapo Trans		
	Avg	Min	Max	Avg	Min	Max	Inches	Inches		
1-Aug-13	79	73	89	77	74	80	0.39	0.13		
2-Aug-13	82	73	95	78	74	85	0.00	0.18		
3-Aug-13	82	74	94	79	75	84	0.00	0.17		
4-Aug-13	83	75	95	80	76	85	0.13	0.18		
5-Aug-13	83	74	94	80	76	86	0.01	0.19		
6-Aug-13	83	72	96	81	76	87	0.00	0.19		
7-Aug-13	82	75	94	81	78	86	0.00	0.17		
8-Aug-13	81	75	93	81	77	85	0.00	0.15		
9-Aug-13	83	74	93	81	77	85	0.00	0.16		
10-Aug-13	80	74	92	80	77	83	0.02	0.15		
11-Aug-13	82	72	96	81	76	87	0.01	0.17		
12-Aug-13	82	72	96	82	77	89	0.00	0.19		
13-Aug-13	79	74	89	79	77	82	0.18	0.11		
14-Aug-13	80	73	92	79	75	84	0.00	0.16		
15-Aug-13	79	72	89	78	76	82	0.36	0.14		
16-Aug-13	76	72	85	75	71	79	4.78	0.08		
17-Aug-13	72	71	74	70	69	71	3.21	0.04		
18-Aug-13	74	69	85	71	68	73	0.73	0.09		
19-Aug-13	79	71	94	74	69	81	0.04	0.16		
20-Aug-13	76	71	91	74	72	80	1.44	0.11		
21-Aug-13	77	71	94	75	71	82	1.13	0.16		
22-Aug-13	73	71	80	73	71	76	0.01	N/A		
23-Aug-13	77	69	89	74	71	79	0.18	0.12		
24-Aug-13	78	72	90	75	72	80	0.01	0.13		
25-Aug-13	77	72	86	74	73	78	0.00	N/A		
26-Aug-13	78	66	89	76	71	80	0.00	N/A		
27-Aug-13	79	66	93	76	71	81	0.00	0.15		
28-Aug-13	80	69	92	77	73	82	0.00	0.15		
29-Aug-13	80	69	92	78	73	83	0.00	0.17		
30-Aug-13	80	71	94	78	75	83	0.53	0.15		
31-Aug-13	80	72	93	78	74	84	0.01	0.15		
High			96			89				
Low		66			68					
Average	79	72	91	77	74	82				
Days over 95 ^o Days of 100 ^o Days below 32 ^o				Total for Month			13.17	4.10	51.4	27.2
				Number of Rain Days			18.00		97.0	
				59 year Average			5.33		39.6	
				Deviation from Average			7.84		11.8	
				Net Gain/loss (Rain - ET)				9.07		24.2

Year Cumulative

Rain	ET
51.4	27.2
97.0	
39.6	
11.8	
	24.2

September Daily Weather Data

Date	Temperature						Precipitation		Rain	ET	
	Air Temp 2 ft			Soil Temp 4 inch			Rain	Evapo Trans			
	Avg	Min	Max	Avg	Min	Max	Inches	Inches			
1-Sep-13	81	73	93	78	75	84	0.00	0	62.0	N/A	
2-Sep-13	79	73	88	77	75	79	0.18	0.1	64.0	N/A	
3-Sep-13	77	72	90	75	73	78	0.02	0.01	96.0	0.1	
4-Sep-13	79	70	95	76	72	81	0.00	0	96.0	0.2	
5-Sep-13	82	71	96	78	73	83	0.00	0	96.0	0.2	
6-Sep-13	82	72	92	78	75	83	0.00	0	65.0	N/A	
7-Sep-13	82	71	94	79	75	84	0.00	0	75.0	N/A	
8-Sep-13	80	68	94	79	74	84	0.00	0	96.0	0.2	
9-Sep-13	79	68	94	79	75	84	0.00	0	93.0	0.2	
10-Sep-13	80	70	92	79	75	84	0.00	0	93.0	0.2	
11-Sep-13	79	70	94	79	75	85	0.00	0	93.0	0.2	
12-Sep-13	80	69	94	80	75	86	0.00	0	91.0	0.2	
13-Sep-13	81	69	95	80	75	86	0.00	0	93.0	0.2	
14-Sep-13	79	69	93	80	76	86	0.00	0	93.0	0.2	
15-Sep-13	81	68	96	80	76	86	0.09	0.08	96.0	0.2	
16-Sep-13	81	73	95	80	76	86	0.01	0.01	96.0	0.2	
17-Sep-13	81	73	94	80	76	86	0.00	0	96.0	0.2	
18-Sep-13	78	69	87	78	75	82	0.00	0	96.0	0.1	
19-Sep-13	77	66	91	78	73	84	0.00	0	96.0	0.1	
20-Sep-13	79	68	93	78	73	84	0.00	0	96.0	0.1	
21-Sep-13	75	68	85	75	73	77	0.22	0.06	96.0	0.1	
22-Sep-13	74	70	79	73	71	75	0.26	0.03	96.0	0.1	
23-Sep-13	76	72	86	72	70	75	0.97	0.17	96.0	0.1	
24-Sep-13	76	71	81	72	71	74	0.38	0.07	96.0	0.1	
25-Sep-13	77	70	90	73	69	77	0.01	0.01	96.0	0.1	
26-Sep-13	73	64	83	72	70	75	0.00	0	96.0	0.1	
27-Sep-13	71	62	84	71	67	76	0.00	0	96.0	0.1	
28-Sep-13	70	60	84	71	66	75	0.00	0	96.0	0.1	
29-Sep-13	71	58	86	71	66	75	0.00	0	96.0	0.1	
30-Sep-13	71	63	81	70	68	73	0.00	0	96.0	0.1	
High			96			86					
Low		58			66						
Average	78	69	90	76	73	81					
Days over 95 ^o				3	Total for Month			2.14	0.54	53.5	27.7
Days of 100 ^o				0	Number of Rain Days			9.00		106.0	
Days below 32 ^o				0	59 year Average			4.38		44.0	
					Deviation from Average			-2.24		9.5	
					Net Gain/loss (Rain - ET)				1.6		25.8

October Daily Weather Data

Date	Temperature						Precipitation				
	Air Temp 2 ft			Soil Temp 4 inch			Rain	Evapo Trans			
	Avg	Min	Max	Avg	Min	Max	Inches	Inches			
1-Oct-13	75	64	88	71	67	75	0.00	0.11			
2-Oct-13	75	68	86	72	69	75	0.00	0.1			
3-Oct-13	75	65	88	72	68	76	0.00	0.11			
4-Oct-13	78	68	92	73	69	78	0.00	0.13			
5-Oct-13	78	69	91	73	70	77	0.00	0.12			
6-Oct-13	72	68	76	71	69	72	0.18	0.05			
7-Oct-13	73	66	78	70	68	72	1.74	0.07			
8-Oct-13	72	62	85	69	66	73	0.00	0.1			
9-Oct-13	66	60	75	67	65	68	0.00	N/A			
10-Oct-13	69	56	84	67	62	72	0.00	0.1			
11-Oct-13	66	58	85	67	63	71	0.00	N/A			
12-Oct-13	71	60	86	67	64	71	0.00	0.1			
13-Oct-13	71	58	87	67	63	71	0.00	0.1			
14-Oct-13	70	62	82	68	64	71	0.00	0.09			
15-Oct-13	68	59	79	67	64	70	0.00	0.08			
16-Oct-13	70	58	85	67	63	70	0.00	0.09			
17-Oct-13	74	60	86	67	64	71	0.00	0.09			
18-Oct-13	71	66	75	68	66	68	0.02	0.05			
19-Oct-13	68	65	74	66	65	67	0.00	0.05			
20-Oct-13	68	61	81	66	63	70	0.00	0.09			
21-Oct-13	66	60	73	65	63	66	0.00	0.06			
22-Oct-13	67	60	75	65	63	67	0.01	0.06			
23-Oct-13	61	47	74	62	59	66	0.01	0.08			
24-Oct-13	58	42	77	61	56	66	0.00	0.07			
25-Oct-13	55	40	68	60	57	64	0.00	0.07			
26-Oct-13	53	36	72	58	53	63	0.00	0.07			
27-Oct-13	59	41	79	59	54	64	0.00	0.07			
28-Oct-13	64	49	82	61	56	66	0.00	0.08			
29-Oct-13	65	49	82	61	57	66	0.00	0.08			
30-Oct-13	66	53	84	62	58	66	0.00	0.08			
31-Oct-13	71	56	82	62	59	65	0.00	0.08			
High			92			78					
Low		36			53						
Average	68	58	81	66	63	70					
Days over 95 ^o				0			Total for Month	1.96	2.43	55.5	30.2
Days below 32 ^o				0			Number of Rain Days	5.00		111.0	
							59 year Average	2.79		46.8	
							Deviation from Average	-0.83		8.7	
							Net Gain/loss (Rain - ET)		-0.47		25.3

Year Cumulative	
Rain	ET
55.5	30.2
111.0	
46.8	
8.7	
	25.3

November Daily Weather Data

Date	Temperature						Precipitation	
	Air Temp 2 ft			Soil Temp 4 inch			Rain	Evapo Trans
	Avg	Min	Max	Avg	Min	Max	Inches	Inches
1-Nov-13	71	64	77	63	62	65	1.03	0.05
2-Nov-13	64	53	77	61	57	64	0.00	0.08
3-Nov-13	57	46	72	57	54	62	0.00	0.07
4-Nov-13	60	43	75	56	52	61	0.01	0.07
5-Nov-13	62	49	74	57	53	61	0.00	0.07
6-Nov-13	67	58	79	59	56	63	0.00	0.07
7-Nov-13	63	50	78	59	56	62	0.00	0.07
8-Nov-13	53	42	69	55	52	59	0.00	0.06
9-Nov-13	58	42	77	55	51	60	0.00	0.06
10-Nov-13	61	50	77	57	54	61	0.00	0.06
11-Nov-13	60	45	79	57	53	61	0.00	0.06
12-Nov-13	57	42	76	55	52	59	0.00	0.07
13-Nov-13	42	31	57	52	49	55	0.00	0.04
14-Nov-13	49	28	69	50	46	55	0.00	0.05
15-Nov-13	59	53	67	52	51	54	0.00	0.05
16-Nov-13	66	55	78	56	52	60	0.00	0.07
17-Nov-13	71	66	79	59	57	62	0.00	0.06
18-Nov-13	70	58	73	61	58	62	1.06	0.05
19-Nov-13	56	46	69	55	52	59	0.00	0.05
20-Nov-13	58	48	71	54	50	57	0.00	0.05
21-Nov-13	63	53	75	55	52	59	0.00	0.06
22-Nov-13	64	60	72	57	55	59	0.00	0.05
23-Nov-13	64	55	71	57	56	59	0.00	0.05
24-Nov-13	49	43	59	53	50	55	0.00	0.04
25-Nov-13	51	41	60	50	47	52	0.00	0.05
26-Nov-13	61	50	71	53	51	56	1.79	0.06
27-Nov-13	43	35	50	48	43	52	0.02	0.04
28-Nov-13	38	28	51	44	40	47	0.00	0.03
29-Nov-13	44	32	63	44	40	48	0.00	0.04
30-Nov-13	48	32	66	44	40	49	0.00	0.04
High			79			65		
Low		28			40			
Average	58	47	70	55	51	58		
Days over 95 ^o				Total for Month			3.91	1.67
				Number of Rain Days			5.00	
				59 year Average			3.34	
				Deviation from Average			0.57	
				Net Gain/loss (Rain - ET)				2.24
Days below 32 ^o								

Year Cumulative	
Rain	ET
59.4	31.8
116.0	
50.1	
9.3	
	27.6

December Daily Weather Data

Date	Temperature						Precipitation		
	Air Temp 2 ft			Soil Temp 4 inch			Rain	Evapo Trans	
	Avg	Min	Max	Avg	Min	Max	Inches	Inches	
1-Dec-13	53	44	67	47	44	51	0.00	0.05	
2-Dec-13	59	50	72	50	47	54	0.00	0.05	
3-Dec-13	63	53	75	51	48	54	0.01	0.06	
4-Dec-13	67	59	77	54	51	57	0.03	0.06	
5-Dec-13	74	68	83	58	56	61	0.00	0.06	
6-Dec-13	73	67	81	60	57	62	0.00	0.06	
7-Dec-13	62	55	72	59	56	60	0.07	0.05	
8-Dec-13	66	55	82	57	55	61	0.00	0.06	
9-Dec-13	71	66	79	60	58	62	0.12	0.05	
10-Dec-13	58	43	71	57	51	60	0.04	0.06	
11-Dec-13	51	36	66	51	47	54	0.00	0.04	
12-Dec-13	49	34	60	49	46	53	0.00	0.03	
13-Dec-13	47	30	63	46	43	50	0.00	0.04	
14-Dec-13	62	51	69	50	47	53	0.45	0.05	
15-Dec-13	48	36	61	49	44	53	0.07	0.05	
16-Dec-13	44	32	63	45	41	49	0.00	0.03	
17-Dec-13	48	33	66	45	41	49	0.00	0.04	
18-Dec-13	48	36	64	45	41	49	0.00	0.03	
19-Dec-13	48	32	70	44	40	48	0.00	0.04	
20-Dec-13	57	38	76	46	41	51	0.00	0.05	
21-Dec-13	70	61	77	53	49	56	0.00	0.06	
22-Dec-13	75	64	81	58	55	60	0.07	0.06	
23-Dec-13	55	44	64	54	49	58	1.64	0.05	
24-Dec-13	43	34	56	47	43	49	0.00	0.03	
25-Dec-13	43	30	55	43	40	47	0.00	0.04	
26-Dec-13	50	45	59	46	44	49	0.00	0.04	
27-Dec-13	53	46	61	47	45	49	0.00	0.04	
28-Dec-13	54	50	58	47	46	48	1.54	0.04	
29-Dec-13	53	44	58	48	47	50	0.40	0.04	
30-Dec-13	50	40	62	47	43	50	0.00	0.04	
31-Dec-13	49	46	52	46	45	47	0.00	0.04	
High			83			62			
Low		30			40				
Average	56	46	68	50	47	53			
Days over 95 ^o				0			Total for Month	4.44	1.44
Days below 32 ^o				3			Number of Rain Days	11.00	
Total days in 2011							59 year Average	4.08	
<32^o or >95^o				14 12			Deviation from Average	0.36	
Net Gain/loss (Rain - ET)								3	

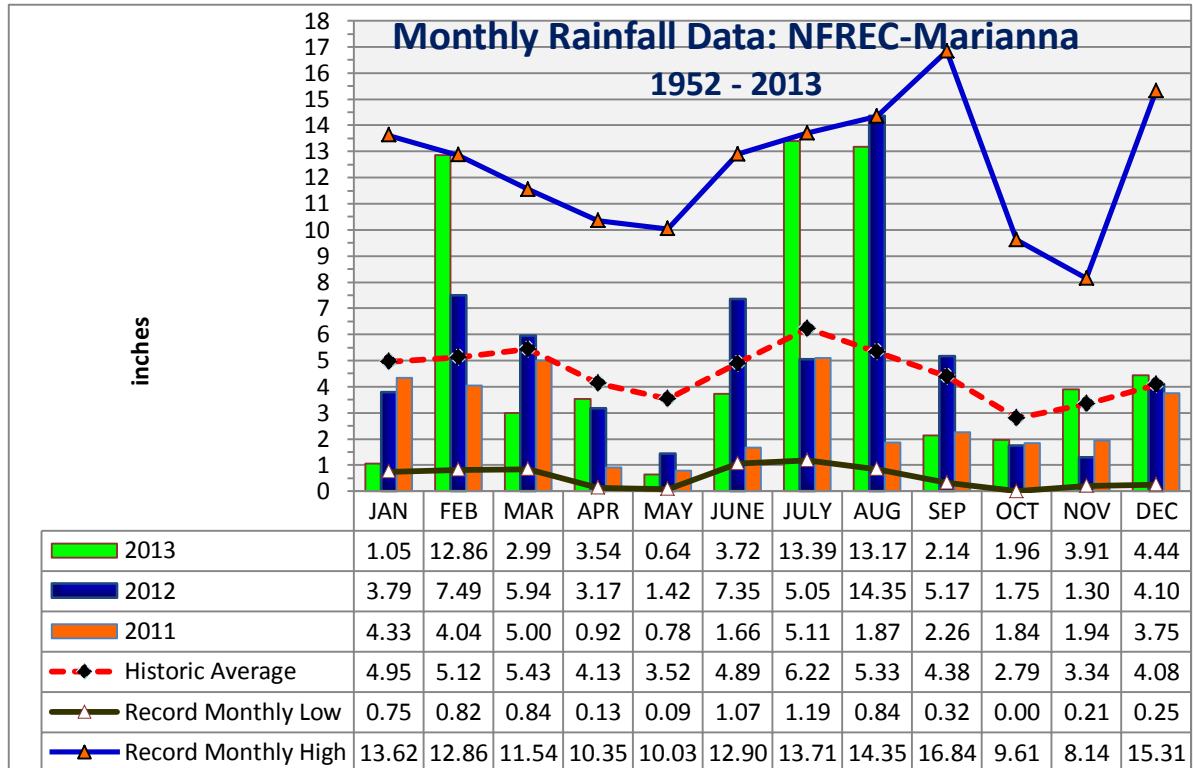
Year Cumulative	
Rain	ET
63.8	33.3
127.0	
54.2	
9.6	
	30.6

Jackson County
Monthly Total Rainfall, 1952 - 2012
No FL Research & Education Cntr, Marianna, FL



YEAR	JAN	FEB	MAR	APR	MAY	JUNE	JULY	AUG	SEP	OCT	NOV	DEC	TOTAL
1952	1.14	8.88	4.48	2.11	5.13	1.12	5.95	8.81	3.09	0.65	3.26	3.42	48.04
1953	4.84	7.26	3.03	8.43	2.43	3.97	6.84	1.63	6.33	0.65	4.09	<u>15.31</u>	64.81
1954	1.33	3.49	2.62	2.58	1.96	3.46	3.28	2.84	1.72	1.30	2.66	1.44	28.68
1955	3.66	1.83	0.84	5.80	3.03	1.62	6.75	3.75	2.44	2.10	0.72	0.77	33.31
1956	3.59	5.18	3.77	2.04	4.03	5.45	8.52	4.09	6.44	5.08	0.28	3.34	51.81
1957	0.75	2.65	5.17	5.74	4.60	5.75	9.83	5.91	<u>16.84</u>	1.31	6.24	2.22	67.01
1958	4.48	3.61	4.73	7.22	5.57	6.00	8.39	3.45	3.68	1.88	1.75	2.32	53.08
1959	3.67	7.06	8.50	5.73	6.95	3.77	4.83	3.67	3.07	7.93	0.21	1.53	56.92
1960	3.36	7.08	3.41	6.80	3.20	4.75	4.97	4.80	6.22	2.00	0.47	2.35	49.41
1961	4.23	4.15	3.64	5.57	3.97	4.41	3.99	11.09	2.60	0.00	2.84	6.23	52.72
1962	1.72	2.80	8.13	3.28	2.86	3.67	7.97	6.07	3.07	2.82	5.16	1.67	49.22
1963	7.31	3.02	3.18	1.36	3.50	7.99	5.16	<u>1.50</u>	5.25	0.01	4.22	6.05	48.55
1964	10.80	6.81	6.41	9.47	2.23	5.68	9.22	3.07	7.47	<u>9.61</u>	3.35	6.44	<u>80.56</u>
1965	2.63	6.09	5.51	3.96	0.18	9.60	3.26	4.18	4.48	3.41	1.81	3.60	48.71
1966	5.56	9.84	2.57	0.77	5.80	3.13	3.25	9.82	5.09	1.41	2.03	4.62	53.89
1967	8.27	3.32	2.19	0.13	2.61	7.02	6.49	3.58	1.40	1.86	2.40	7.98	47.25
1968	1.28	2.30	3.40	2.50	3.39	1.18	5.45	4.61	2.99	1.41	5.11	5.34	38.96
1969	1.68	3.49	7.08	4.54	3.01	1.71	13.18	3.05	5.64	1.50	1.22	3.80	49.90
1970	4.16	9.20	8.86	1.83	1.81	3.69	5.04	8.01	0.49	4.40	2.21	3.13	52.83
1971	1.97	6.11	7.15	3.17	3.03	3.85	5.20	6.76	2.47	1.84	1.94	3.70	47.19
1972	3.62	6.03	6.41	0.38	2.87	8.89	3.78	5.39	2.14	2.44	3.29	3.77	49.01
1973	8.14	7.71	8.38	7.60	6.87	3.63	11.12	4.51	5.40	0.27	3.64	5.33	72.60
1974	5.24	5.80	2.66	3.40	3.78	1.56	3.29	8.01	4.68	0.84	2.14	2.89	44.29
1975	10.21	6.36	4.91	<u>10.35</u>	3.97	4.10	<u>13.71</u>	5.40	3.81	4.35	2.89	3.28	73.34
1976	6.99	1.50	4.89	1.87	8.89	3.08	3.03	3.47	5.47	6.18	5.72	3.97	55.06
1977	3.47	1.81	6.52	0.88	0.60	6.36	3.55	5.22	9.83	2.59	<u>8.14</u>	4.19	53.16
1978	7.28	3.28	7.25	4.65	6.73	3.79	7.25	4.90	0.98	0.20	6.01	3.65	55.97
1979	7.30	7.78	3.26	7.75	6.22	1.31	7.49	6.30	11.51	0.53	4.47	2.84	66.76
1980	6.58	2.96	<u>11.54</u>	9.29	4.50	3.50	5.87	2.53	4.56	4.71	1.52	0.25	57.81
1981	1.70	5.32	5.94	3.03	2.73	4.74	4.02	2.53	2.44	1.75	0.85	4.94	39.99
1982	4.17	5.61	2.91	5.93	5.39	3.00	7.51	4.42	6.00	2.65	2.34	9.14	59.07
1983	4.92	6.84	8.53	7.88	2.27	5.66	1.19	2.53	8.97	3.52	5.90	7.65	65.86
1984	5.49	5.01	8.62	6.29	2.50	5.31	12.01	5.76	0.32	1.60	1.63	0.80	55.34
1985	4.60	4.46	2.60	1.18	4.44	5.68	3.68	5.58	1.42	7.42	7.91	5.34	54.31
1986	5.68	10.27	3.21	0.83	2.26	1.85	2.75	4.12	2.35	2.22	4.40	5.68	45.62
1987	8.62	5.52	7.23	0.40	4.46	5.43	5.51	4.18	2.27	0.06	4.02	0.81	48.51
1988	5.57	6.40	8.41	2.69	0.28	1.07	5.43	3.98	5.53	1.98	3.28	1.23	45.85
1989	1.59	2.74	4.96	3.63	7.01	<u>12.90</u>	11.19	3.06	3.36	7.20	4.71	5.45	67.80
1990	5.26	4.57	4.55	3.00	3.22	4.02	3.65	2.91	0.85	1.34	0.93	3.42	37.72
1991	<u>13.62</u>	3.44	9.00	5.32	<u>10.03</u>	5.30	10.67	3.89	1.53	1.17	1.60	3.00	68.57
1992	8.37	6.29	7.92	2.50	1.41	11.16	8.69	6.72	3.19	2.08	7.40	2.93	68.66
1993	12.00	3.38	7.41	1.50	1.60	4.18	6.68	3.89	3.44	2.90	2.27	3.63	52.88
1994	8.64	2.53	6.25	4.34	1.82	11.41	10.95	9.08	6.44	7.62	2.53	3.79	75.40
1995	5.23	3.13	4.29	4.35	3.90	5.56	3.02	6.16	0.86	7.51	4.12	1.78	49.91

YEAR	JAN	FEB	MAR	APR	MAY	JUNE	JULY	AUG	SEP	OCT	NOV	DEC	TOTAL
1996	3.64	5.99	8.47	5.76	1.50	5.43	2.83	14.28	5.32	3.81	2.01	3.65	62.69
1997	6.68	5.29	2.63	10.08	5.91	6.41	5.73	4.65	3.78	2.10	6.85	8.44	68.55
1998	6.28	8.30	6.11	2.24	1.45	2.35	4.37	2.20	16.31	0.30	2.05	1.98	53.94
1999	6.95	2.90	3.61	1.50	6.71	8.99	8.64	4.02	4.33	3.13	3.56	2.50	56.84
2000	3.78	4.96	4.48	4.05	0.09	4.00	3.40	7.15	7.20	0.71	4.43	3.21	47.46
2001	2.16	0.82	10.00	1.99	2.52	8.24	4.66	8.21	1.90	1.51	1.70	0.78	44.49
2002	3.82	2.44	5.51	5.78	2.19	3.45	10.34	3.30	11.83	7.36	7.76	5.99	69.77
2003	2.30	7.03	8.18	4.89	3.11	6.11	7.84	5.99	2.39	3.58	3.04	3.12	57.58
2004	3.19	7.66	0.90	4.37	1.19	6.66	4.92	1.67	10.01	3.89	4.97	3.25	52.68
2005	3.33	2.31	9.05	7.04	1.67	7.47	9.44	11.71	1.62	0.03	3.15	4.81	61.63
2006	4.82	3.90	0.91	1.61	4.97	1.99	2.22	5.18	0.91	3.09	3.41	5.43	38.44
2007	5.99	2.45	1.10	0.99	1.57	3.97	3.94	4.18	1.27	4.79	1.89	4.03	36.17
2008	4.26	9.00	9.11	4.28	1.46	8.64	4.02	9.29	0.74	5.11	3.18	8.23	67.32
2009	2.33	3.26	7.11	7.73	9.17	2.78	3.88	3.19	5.22	3.39	2.35	9.57	59.98
2010	7.53	3.99	3.41	4.01	5.09	2.92	2.31	0.84	1.33	0.22	5.82	0.63	38.10
2011	4.33	4.04	5.00	0.92	0.78	1.66	5.11	1.87	2.26	1.84	1.94	3.75	33.50
2012	3.79	7.49	5.94	3.17	1.42	7.35	5.05	14.35	5.17	1.75	1.30	4.10	60.88
2013	1.05	12.86	2.99	3.54	0.64	3.72	13.39	13.17	2.14	1.96	3.91	4.44	63.81
Deviation from the Average Monthly Rainfall													
Inches	-3.90	7.74	-2.44	-0.59	-2.88	-1.17	7.17	7.84	-2.24	-0.83	0.57	0.36	9.61
Monthly Average Rainfall, 1952-2013													
AVG.	4.95	5.12	5.43	4.13	3.52	4.89	6.22	5.33	4.38	2.79	3.34	4.08	54.20
% of Annual Rainfall Occuring each Month													
	9.1%	9.5%	10.0%	7.6%	6.5%	9.0%	11.5%	9.8%	8.1%	5.1%	6.2%	7.5%	
Record High/Low for the Month													
LOW	0.75	0.82	0.84	0.13	0.09	1.07	1.19	0.84	0.32	0.00	0.21	0.25	28.68
HIGH	13.62	12.86	11.54	10.35	10.03	12.90	13.71	14.35	16.84	9.61	8.14	15.31	80.56



Jackson County

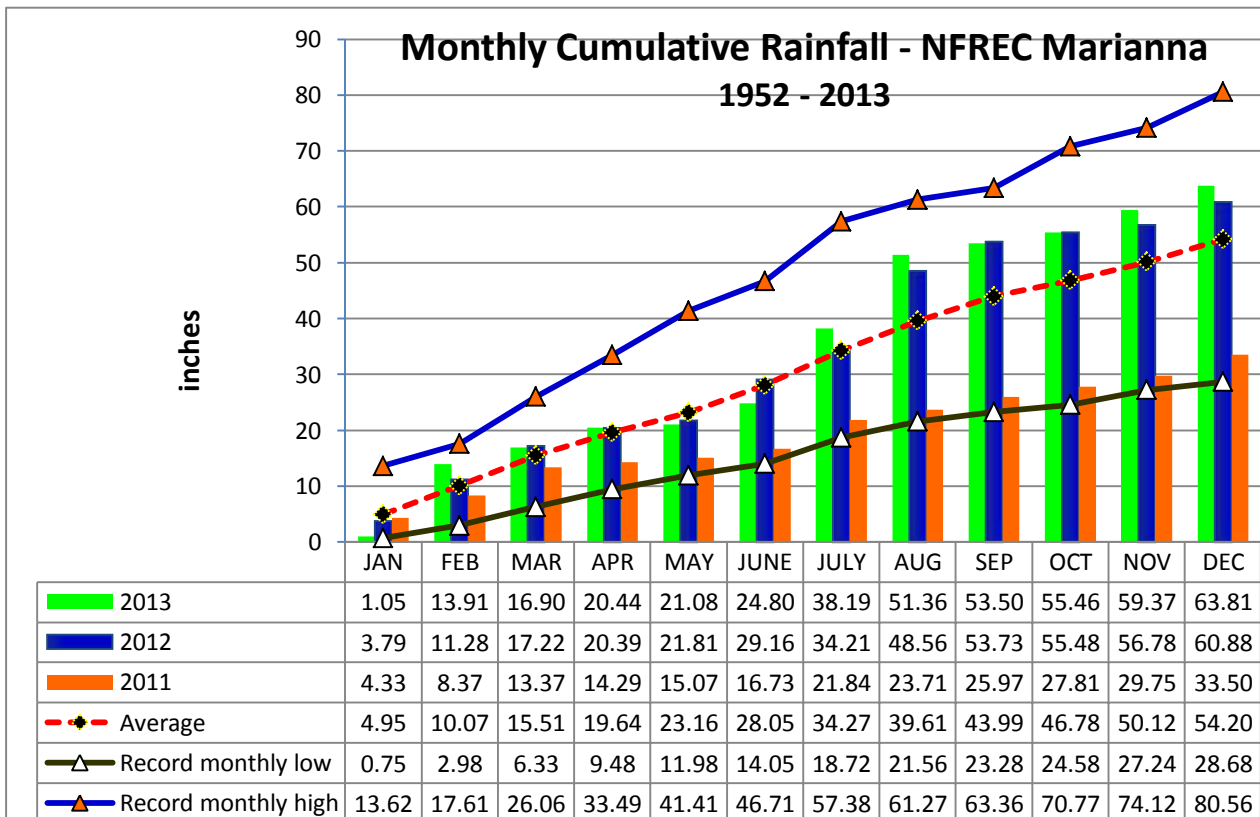
Monthly Cumulative Rainfall, 1952 -2012

North Florida Research & Education Center Marianna,



YEAR	JAN	FEB	MAR	APR	MAY	JUNE	JULY	AUG	SEP	OCT	NOV	DEC
1952	1.14	10.02	14.50	16.61	21.74	22.86	28.81	37.62	40.71	41.36	44.62	48.04
1953	4.84	12.10	15.13	23.56	25.99	29.96	36.80	38.43	44.76	45.41	49.50	64.81
1954	1.33	4.82	7.44	10.02	11.98	15.44	18.72	21.56	23.28	24.58	27.24	28.68
1955	3.66	5.49	6.33	12.13	15.16	16.78	23.53	27.28	29.72	31.82	32.54	33.31
1956	3.59	8.77	12.54	14.58	18.61	24.06	32.58	36.67	43.11	48.19	48.47	51.81
1957	0.75	3.40	8.57	14.31	18.91	24.66	34.49	40.40	57.24	58.55	64.79	67.01
1958	4.48	8.09	12.82	20.04	25.61	31.61	40.00	43.45	47.13	49.01	50.76	53.08
1959	3.67	10.73	19.23	24.96	31.91	35.68	40.51	44.18	47.25	55.18	55.39	56.92
1960	3.36	10.44	13.85	20.65	23.85	28.60	33.57	38.37	44.59	46.59	47.06	49.41
1961	4.23	8.38	12.02	17.59	21.56	25.97	29.96	41.05	43.65	43.65	46.49	52.72
1962	1.72	4.52	12.65	15.93	18.79	22.46	30.43	36.50	39.57	42.39	47.55	49.22
1963	7.31	10.33	13.51	14.87	18.37	26.36	31.52	33.02	38.27	38.28	42.50	48.55
1964	10.80	<u>17.61</u>	24.02	<u>33.49</u>	35.72	41.40	50.62	53.69	61.16	<u>70.77</u>	<u>74.12</u>	<u>80.56</u>
1965	2.63	8.72	14.23	18.19	18.37	27.97	31.23	35.41	39.89	43.30	45.11	48.71
1966	5.56	15.40	17.97	18.74	24.54	27.67	30.92	40.74	45.83	47.24	49.27	53.89
1967	8.27	11.59	13.78	13.91	16.52	23.54	30.03	33.61	35.01	36.87	39.27	47.25
1968	1.28	3.58	6.98	9.48	12.87	14.05	19.50	24.11	27.10	28.51	33.62	38.96
1969	1.68	5.17	12.25	16.79	19.80	21.51	34.69	37.74	43.38	44.88	46.10	49.90
1970	4.16	13.36	22.22	24.05	25.86	29.55	34.59	42.60	43.09	47.49	49.70	52.83
1971	1.97	8.08	15.23	18.40	21.43	25.28	30.48	37.24	39.71	41.55	43.49	47.19
1972	3.62	9.65	16.06	16.44	19.31	28.20	31.98	37.37	39.51	41.95	45.24	49.01
1973	8.14	15.85	24.23	31.83	38.70	42.33	53.45	57.96	<u>63.36</u>	63.63	67.27	72.60
1974	5.24	11.04	13.70	17.10	20.88	22.44	25.73	33.74	38.42	39.26	41.40	44.29
1975	10.21	16.57	21.48	31.83	35.80	39.90	53.61	59.01	62.82	67.17	70.06	73.34
1976	6.99	8.49	13.38	15.25	24.14	27.22	30.25	33.72	39.19	45.37	51.09	55.06
1977	3.47	5.28	11.80	12.68	13.28	19.64	23.19	28.41	38.24	40.83	48.97	53.16
1978	7.28	10.56	17.81	22.46	29.19	32.98	40.23	45.13	46.11	46.31	52.32	55.97
1979	7.30	15.08	18.34	26.09	32.31	33.62	41.11	47.41	58.92	59.45	63.92	66.76
1980	6.58	9.54	21.08	30.37	34.87	38.37	44.24	46.77	51.33	56.04	57.56	57.81
1981	1.70	7.02	12.96	15.99	18.72	23.46	27.48	30.01	32.45	34.20	35.05	39.99
1982	4.17	9.78	12.69	18.62	24.01	27.01	34.52	38.94	44.94	47.59	49.93	59.07
1983	4.92	11.76	20.29	28.17	30.44	36.10	37.29	39.82	48.79	52.31	58.21	65.86
1984	5.49	10.50	19.12	25.41	27.91	33.22	45.23	50.99	51.31	52.91	54.54	55.34
1985	4.60	9.06	11.66	12.84	17.28	22.96	26.64	32.22	33.64	41.06	48.97	54.31
1986	5.68	15.95	19.16	19.99	22.25	24.10	26.85	30.97	33.32	35.54	39.94	45.62
1987	8.62	14.14	21.37	21.77	26.23	31.66	37.17	41.35	43.62	43.68	47.70	48.51
1988	5.57	11.97	20.38	23.07	23.35	24.42	29.85	33.83	39.36	41.34	44.62	45.85
1989	1.59	4.33	9.29	12.92	19.93	32.83	44.02	47.08	50.44	57.64	62.35	67.80
1990	5.26	9.83	14.38	17.38	20.60	24.62	28.27	31.18	32.03	33.37	34.30	37.72
1991	<u>13.62</u>	17.06	<u>26.06</u>	31.38	<u>41.41</u>	<u>46.71</u>	<u>57.38</u>	<u>61.27</u>	62.80	63.97	65.57	68.57
1992	8.37	14.66	22.58	25.08	26.49	37.65	46.34	53.06	56.25	58.33	65.73	68.66
1993	12.00	15.38	22.79	24.29	25.89	30.07	36.75	40.64	44.08	46.98	49.25	52.88
1994	8.64	11.17	17.42	21.76	23.58	34.99	45.94	55.02	61.46	69.08	71.61	75.40
1995	5.23	8.36	12.65	17.00	20.90	26.46	29.48	35.64	36.50	44.01	48.13	49.91

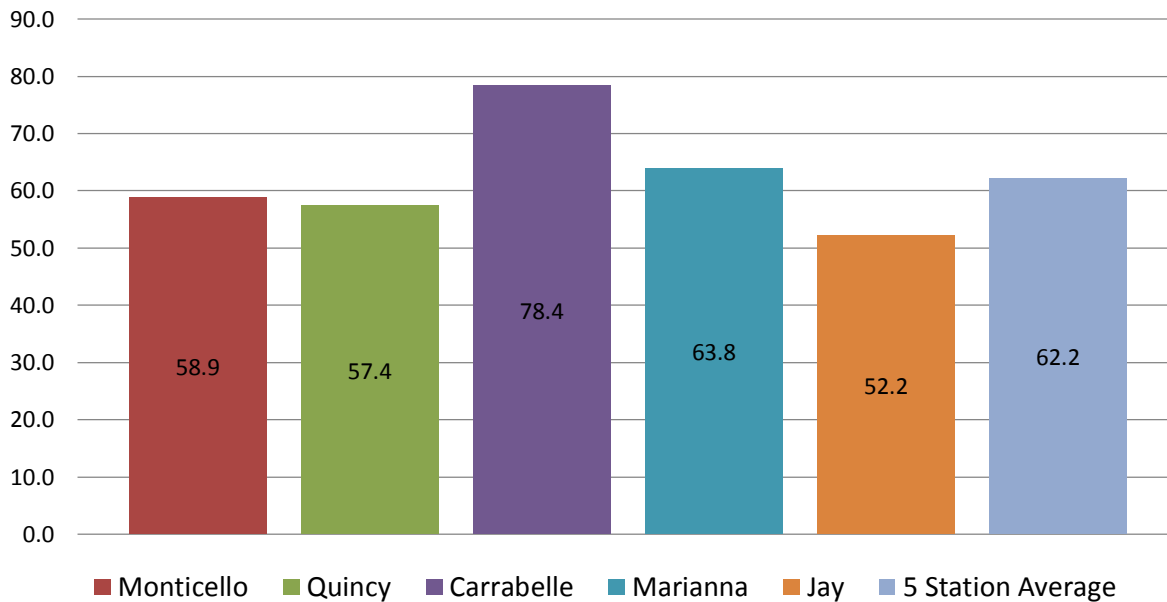
YEAR	JAN	FEB	MAR	APR	MAY	JUNE	JULY	AUG	SEP	OCT	NOV	DEC
1996	3.64	9.63	18.10	23.86	25.36	30.79	33.62	47.90	53.22	57.03	59.04	62.69
1997	6.68	11.97	14.60	24.68	30.59	37.00	42.73	47.38	51.16	53.26	60.11	68.55
1998	6.28	14.58	20.69	22.93	24.38	26.73	31.10	33.30	49.61	49.91	51.96	53.94
1999	6.95	9.85	13.46	14.96	21.67	30.66	39.30	43.32	47.65	50.78	54.34	56.84
2000	3.78	8.74	13.22	17.27	17.36	21.36	24.76	31.91	39.11	39.82	44.25	47.46
2001	2.16	2.98	12.98	14.97	17.49	25.73	30.39	38.60	40.50	42.01	43.71	44.49
2002	3.82	6.26	11.77	17.55	19.74	23.19	33.53	36.83	48.66	56.02	63.78	69.77
2003	2.30	9.33	17.51	22.40	25.51	31.62	39.46	45.45	47.84	51.42	54.46	57.58
2004	3.19	10.85	11.75	16.12	17.31	23.97	28.89	30.56	40.57	44.46	49.43	52.68
2005	3.33	5.64	14.69	21.73	23.40	30.87	40.31	52.02	53.64	53.67	56.82	61.63
2006	4.82	8.72	9.63	11.24	16.21	18.20	20.42	25.60	26.51	29.60	33.01	38.44
2007	5.99	8.44	9.54	10.53	12.10	16.07	20.01	24.19	25.46	30.25	32.14	36.17
2008	4.26	13.26	22.37	26.65	28.11	36.75	40.77	50.06	50.80	55.91	59.09	67.32
2009	2.33	5.59	12.70	20.43	29.60	32.38	36.26	39.45	44.67	48.06	50.41	59.98
2010	7.53	11.52	14.93	18.94	24.03	26.95	29.26	30.10	31.43	31.65	37.47	38.10
2011	4.33	8.37	13.37	14.29	15.07	16.73	21.84	23.71	25.97	27.81	29.75	33.50
2012	3.79	11.28	17.22	20.39	21.81	29.16	34.21	48.56	53.73	55.48	56.78	60.88
2013	1.05	13.91	16.90	20.44	21.08	24.80	38.19	51.36	53.50	55.46	59.37	63.81
2013 Deviation from the Average Accumulation												
Inches	-3.90	3.84	1.39	0.80	-2.08	-3.25	3.92	11.76	9.51	8.68	9.25	9.61
Average Accumulation, 1952-2013												
Inches	4.95	10.07	15.51	19.64	23.16	28.05	34.27	39.61	43.99	46.78	50.12	54.20
Record High/Low Accumulation												
LOW	0.75	2.98	6.33	9.48	11.98	14.05	18.72	21.56	23.28	24.58	27.24	28.68
HIGH	13.62	17.61	26.06	33.49	41.41	46.71	57.38	61.27	63.36	70.77	74.12	80.56



2013 FL Panhandle Rainfall Summary

FAWN Station	Jan	Feb	Mar	Apr	May	June	July	Aug	Sept	Oct	Nov	Dec	Total
Monticello	1.1	12.3	3.5	6.3	1.7	8.0	12.3	5.9	1.3	0.5	0.9	5.1	58.9
Quincy	1.3	13.7	5.5	4.1	0.6	5.0	11.4	4.6	3.7	0.7	3.0	3.8	57.4
Carrabelle	1.2	9.8	3.7	4.8	1.4	7.6	18.7	14.0	6.8	1.6	4.1	5.0	78.4
Marianna	1.1	12.9	3.0	3.5	0.6	3.7	13.4	13.2	2.1	2.0	3.9	4.4	63.8
DeFuniak*						7.1	12.8	7.8	6.2	1.2	3.3	8.0	
Jay	2.5	10.2	1.4	4.7	0.7	5.8	11.8	5.5	2.3	1.7	2.4	3.3	52.2
5 Station Average	1.4	11.8	3.4	4.7	1.0	6.2	13.4	8.5	3.7	1.3	2.9	4.9	62.2

FL Panhandle 2013 Rainfall Totals



* DeFuniak FAWN Station was just installed in late May, so it will not be included in average until 2014