

Youth Beef Cattle Show

Schedule:

Monday, October 5th

3:00-6:00 PM Weigh-In/Check-In

6:30 PM Exhibitors Meeting

(All exhibitors must attend)

Wednesday, October 7th

6:00 PM Showmanship Contest

Thursday, October 8th

1:00 PM Breeding Cattle Show

6:00 PM Steer Show

Beef Cattle Show Committee:

Larry Reimann, Chairperson – 722-9156

Larry Moore—482-1200 ext 209

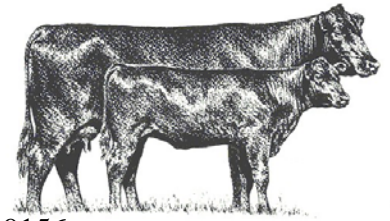
Larry Warden—482-2119

Junior Committee members

Brittany Peacock – 573-1567

Lawson Mozley – 693-0726

Fair Board Liaison—John Padgett—482-2290



RULES AND REGULATIONS:

1. Exhibitors must be 4-H and FFA members in the following Florida counties: Jackson, Washington, Holmes, Calhoun, Bay, Liberty, and Gadsden.
2. All exhibitors must be presently enrolled in high school. All participants must be at least eight years old by September 1st and not to exceed 18 years of age. There will be a \$10 entry fee for each animal exhibited. Entry forms and fees are due to the Jackson County Fair office by 4:30 PM on **September 15th** or postmarked by September 15th. All entries postmarked or received after September 15th will be assessed an additional \$10 late entry fee per animal. No late entries will be accepted after September 29th.
3. All animals will be required to have a Certificate of Veterinary Inspection (health paper) dated no more than 90 days prior to October 5th. All animals must be permanently identified by tattoo or brand.
4. All animals must be owned or leased prior to the entry deadline. Proof of Ownership (copy of registration) or an official Lease Agreement (if animal is leased) **must accompany the entry form for breeding cattle.** (See official lease agreement). Steers may not be leased.
5. Commercial heifers will weigh in at registration and be shown by the appropriate weight classes.
6. All heifers must be born after September 1, 2006.
7. **ALL STEERS AND HEIFERS MUST BE DEHORNED.** Horns must be removed and made smooth with the head. No horned cattle will be allowed to show!
8. Exhibitors must show their own animals in all classes. The animal must be entered in the Show in order to compete in Showmanship. In the event of an exhibitor having more than one animal in the same class, that exhibitor must notify the Show Chairman of who the “assisting” showman will be. Assisting showman must be a bonafide 4-H or FFA member.

9. Entries must be halter broken and under the complete control of the exhibitor (cattle must be able to be tied, paraded, and shown without endangering others). The Beef Show Committee reserves the right to dismiss from the Show, any animal that may endanger other Show participants. If an animal gets away from the exhibitor three times in the Show Ring, the animal will automatically be dismissed from the Show Ring and not be allowed to compete. Upon dismissal from the Show Ring, the entry will receive the lowest placing in the class and forfeit entry fees.
10. All cattle will be double tied with ½ inch or larger rope and not kept in pens.
11. A Show Ring Preparation Policy is being implemented for all Showmanship classes! No grooming material is allowed on the animal. All animals must be washed clean and dried without the use of any grooming aids (BLOW & GO). The use of brush and/or scotch comb is encouraged.
12. Reserving and setting up tie spaces prior to check-in must be pre-approved by the Show Chairman.
13. All cattle will be released following the Steer Show on Thursday night.
14. Breeding cattle and steer entries are not limited for each exhibitor.
15. For Jackson County steer exhibitors, the individual steer selected to be entered in the Jackson County Fed Cattle Show (February) must be declared by the end of the Fair Cattle Show.
16. No exhibitor, parent or spectator shall approach the Judge with a grievance or negative comment. All grievances must be directed to the Chairman of the Beef Show to be reviewed by the Grievance Committee. Premium money may be withheld and future show privileges revoked for anyone not adhering to this rule. This will be firmly enforced.
17. The Fair Beef Show management is the responsibility of the Beef Show Committee. Rule and disciplinary interpretations of the committee will be final. Grievances or challenges of the rules will be handled with the procedures outlined in the official Grievance Policy found in the General Rules of the Fair Rule Book.

Youth Beef Showmanship

The showmanship competition will be held on Wednesday evening. Animals are not to be groomed for the competition (See rule #10). It is recommended that they be brushed and washed prior to showing.

Required Dress Code for Showmanship: 4-H or FFA official dress, button down shirt with collar and dark pants. No tee shirts, no tennis shoes or open toed shoes, no holey or ragged jeans and no under garments showing. Also, no clothing with profanity, offensive language, racist undertones, or sexually demeaning undertones will be permitted.

Participants wearing inappropriate clothing will not be allowed to show!

Youth must exhibit their own animal; the animal must be entered in the show to be eligible to compete in showmanship. Showmanship is open to all exhibitors. The classes will be based by age. A plaque will be awarded to the best showman in each of the following age categories:

- **Junior Showmanship—8-10 year olds**
- **Intermediate Showmanship—11-13 year olds**
- **Senior Showmanship—14-18 year olds**

If there are more than 12 entries in an age division, classes will be divided into appropriate age categories. The class winners will then compete for best age division Showman.

Breeding Beef Show

1. There must be a minimum of 3 animals of the same breed to qualify the breed for Grand and Reserve Champion selection. Grand and Reserve Champions will be awarded a rosette.
2. A Supreme Champion and Reserve Supreme Female will be selected from the registered and commercial champions (only from qualifying breeds).

Breeding Beef Classes: Registered Females

Class 1: January 1 – June 30, 2009

Class 2: July 1 – Dec. 31, 2008

Class 3: Jan. 1 – June 31, 2008

Class 4: July 1 – Dec. 31, 2007

Class 5: Jan. 1 – June 31, 2007

Class 6: September 1 - Dec. 31, 2006 *NEW

**There will be no bull classes!*

Commercial Females: (Non-registered or crossbred)

Class 7: All crossbred heifers born after September 1, 2006 are eligible for entry. Commercial heifers will be shown in classes by weight. The Beef Show Committee will set the number and size of classes based on natural weight breaks and even distribution.

The first and second place heifers in each class will compete for Champion and Reserve Champion of the qualifying breed divisions. Champions of each breed division will compete for Supreme Champion and Reserve Supreme Champion along with the Reserve Champion of the breed division from which the Supreme Champion was selected.

Steer Show

1. Steers must weigh a minimum of 550 pounds at the weigh-in.
2. Steers will be judged on the basis of prospect feeder steers.
3. Steers must show a predominance of beef breeding.
4. Steers must be dehorned, castrated and healed prior to the weigh-in.
5. Steers must have been tattooed prior to the weigh-in.

6. Classes will be set by the Show Committee based by weight following the weigh-in.
7. A Grand and Reserve Champion steer will be selected from the class winning entries along with the 2nd place entry from the Grand Champion's class.

Beef Cattle Show Premiums and Awards

The Jackson County Fair Board will provide class premiums, rosettes and plaques as follows:

Beef Class Placing Premiums & Ribbons

1 st Place	2 nd Place	3 rd Place	4 th Place	5 th Place
\$25	\$20	\$15	\$10	\$5

Strip Ribbons shall be awarded for first through fifth place in class for purebred & commercial heifer classes as well as the steer classes.

Supreme Champion Female—plaque
 Reserve Supreme Champion Female—plaque

Breed and Commercial Heifer Awards

(4-6) Grand Champion—rosettes (purple)
 (4-6) Reserve Champion—rosettes (lavender)

Steer Show Awards

Class Placing Premiums
 Grand Champion Steer—plaque
 Reserve Champion Steer—plaque

Showmanship Awards

Best Junior Showman—plaque
 Best Intermediate Showman—plaque
 Best Senior Showman—plaque